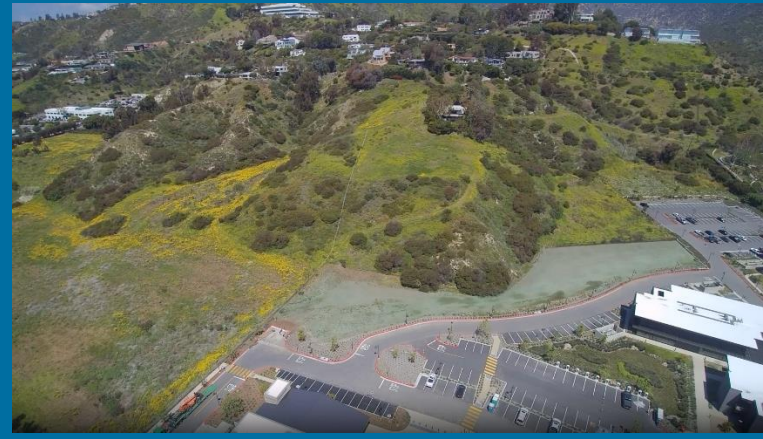




Malibu Community Lands Outreach & Engagement Report



October 28, 2024

City's Goals

The primary **Goal** of today's City Council meeting is to review the Final Community Lands Outreach and Engagement Report, which outlines community priorities and recommendations for the use of five City-owned parcels. During this session, we aim to provide Council with clear, concise information about the report's findings, offer quick facts and supplemental data, and address any questions or concerns you may have.

Our **Objective** is to ensure that the Council has a clear understanding of the report, enabling you to make informed decisions about the prioritization of projects for each parcel of land.

What does Malibu's future look like?

Timeline of Events

March 2024

Outreach &
Engagement Plan



Apr. - Jun. 2024

Phase 1: Initial,
broad outreach
and engagement



Jul. - Aug. 2024

Summer Break:
reconciling Phase 1
data and planning
for Phase 2



Aug. - Sept. 2024

Phase 2: Broad
outreach for
targeted feedback
and engagement

Phase 2 Feedback Received

- Across all five lands, open space and grass sports fields were consistently popular suggestions through all feedback channels
- Other frequent suggestions on specific lands include community pool/splash pad, sports courts and outdoor amphitheater
- We did not combine the data to maintain the integrity of each dataset



Phase 2: Email & Webform Feedback

	Chili Cook-Off	Triangle	Heathercliff	Trancas	La Paz
Open Space	33 (18.4%)	55 (34.8%)	47 (22.8%)	72 (36.2%)	46 (28.1%)
Grass Sports Fields	26 (14.5%)	9 (5.7%)	30 (14.6%)	25 (12.6%)	7 (4.3%)
Sports Courts	20 (11.2%)	9 (5.7%)	22 (10.7%)	13 (6.5%)	14 (8.5%)
Community Pool/Splash Pad	18 (10.1%)	7 (4.4%)	40 (19.4%)	23 (11.6%)	13 (7.9%)
Housing	17 (9.5%)	3 (1.9%)	10 (4.9%)	13 (6.5%)	16 (9.8%)
Indoor Theatre/Arts Center	16 (8.9%)	8 (5.1%)	5 (2.4%)	3 (1.5%)	10 (6.1%)
Community Center	15 (8.4%)	18 (11.4%)	24 (11.7%)	8 (4.0%)	16 (9.8%)
Other	14 (7.8%)	14 (8.9%)	15 (7.3%)	17 (8.5%)	24 (14.6%)
Commercial Use	11 (6.2%)	31 (19.6%)	8 (3.9%)	11 (5.5%)	12 (7.3%)
Outdoor Amphitheater	9 (5.0%)	4 (2.5%)	5 (2.4%)	14 (7.0%)	6 (3.7%)
<i>Total Suggestions</i>	179	158	206	199	164

Phase 2: Meeting & Pop-up Event Feedback

	Chili Cook-Off	Triangle	Heathercliff	Trancas	La Paz
Open Space	13 (13.5%)	13 (28.9%)	14 (14.7%)	24 (34.3%)	14 (29.8%)
Grass Sports Fields	20 (20.8%)	1 (2.2%)	13 (13.7%)	9 (12.9%)	0 (0.0%)
Sports Courts	7 (7.3%)	1 (2.2%)	8 (8.4%)	8 (11.4%)	1 (2.1%)
Community Pool/Splash Pad	10 (10.4%)	0 (0.0%)	19 (20.0%)	4 (5.7%)	0 (0.0%)
Housing	8 (8.3%)	0 (0.0%)	7 (7.4%)	8 (11.4%)	8 (17.0%)
Indoor Theatre/Arts Center	8 (8.3%)	2 (4.4%)	6 (6.3%)	0 (0.0%)	3 (6.4%)
Community Center	10 (10.4%)	3 (6.7%)	14 (14.7%)	5 (7.1%)	2 (4.3%)
Other	3 (3.1%)	6 (13.3%)	4 (4.2%)	4 (5.7%)	9 (19.2%)
Commercial Use	6 (6.3%)	19 (42.2%)	4 (4.2%)	4 (5.7%)	9 (19.2%)
Outdoor Amphitheater	11 (11.5%)	0 (0.0%)	6 (6.3%)	4 (5.7%)	1 (2.1%)
<i>Total Suggestions</i>	96	45	95	70	47

Recommendations from Commissions

- **Moved by the Parks and Recreation Commission**

Chair Skophammer moved, and Vice Chair Peak seconded a motion to recommend a multi-generational use community center with a gym, pool, field space, and potentially library annex services to be preferably located on the Heathercliff property. The motion carried 4-1 for the Parks and Recreation Commission, Commissioner Goldfarb dissenting. The motion carried 3-1 for the Malibu Arts Commission; Commissioner Jones dissenting and Commissioner Cherin absent.

- **Moved by Malibu Arts Commission's Recommendation**

Chair Lawrence moved, and Vice Chair Holland seconded a motion to recommend an arts center with art galleries, a 500-seat auditorium with first class projection and sound, with possible library annex services preferably on the east side of Malibu with a sculpture garden on the triangle property. The motion carried unanimously for the Parks and Recreation Commission. The motion carried 4-0; Commissioner Cherin absent.

Environmental Constraints

Environmental Constraints

City Council Discussion

- How does Council want to prioritize the land uses and projects identified by the community?
- What is the direction for staff in terms of the next steps?

