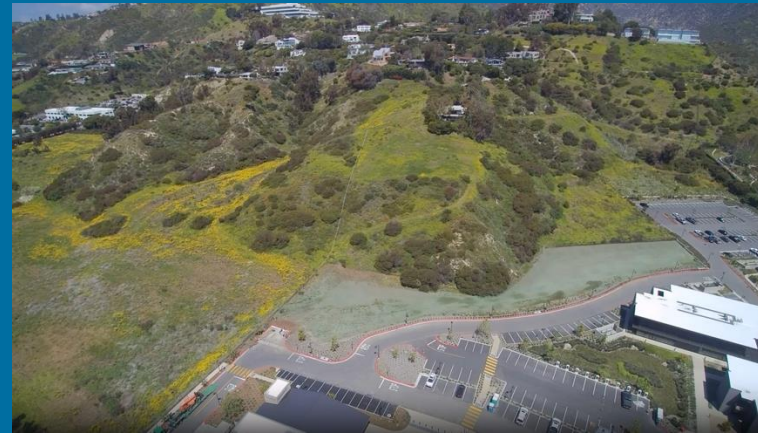




# Malibu Community Lands Phase 2 Community Meeting



August 22, 2024

# Agenda

- Introduction
- Phase 1 Results
- Phase 2 Overview
- Breakout Groups / Activity
- Group Discussion
- Next Steps

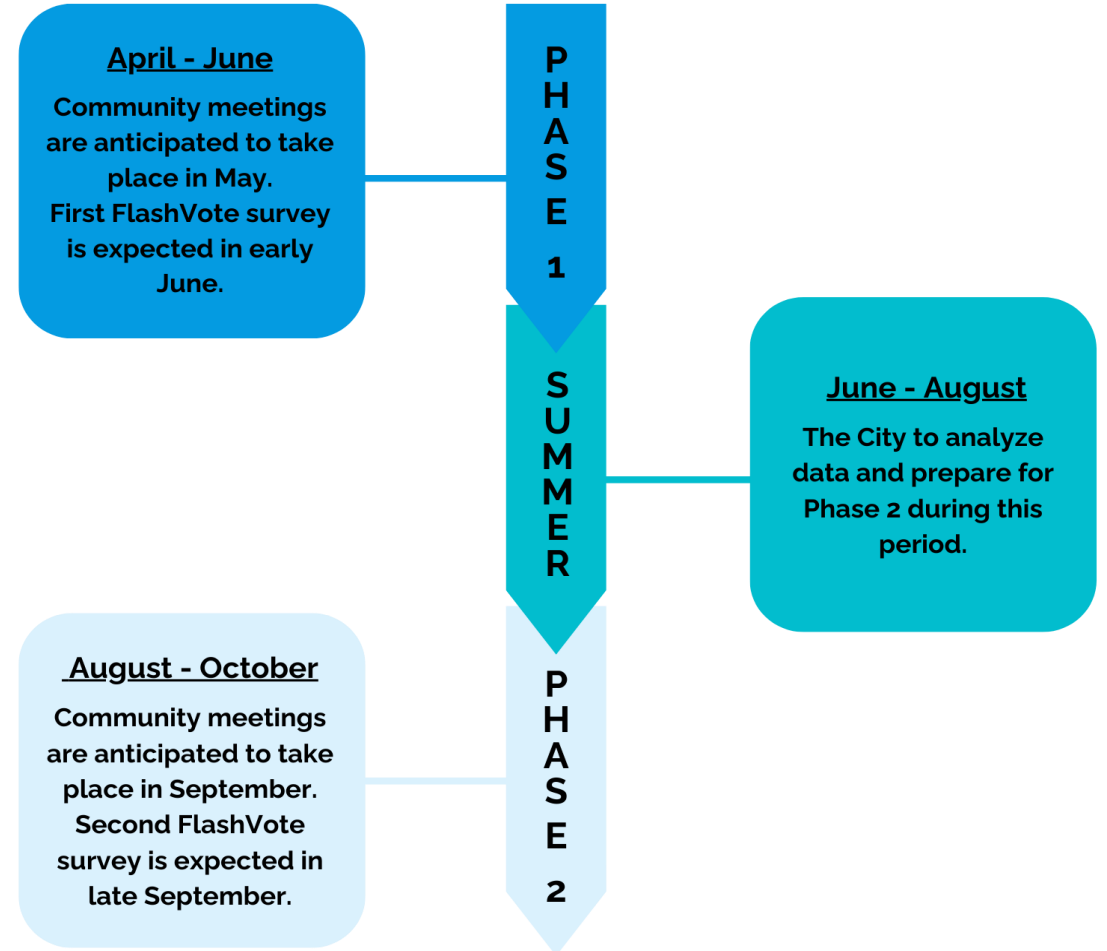




# Introductions

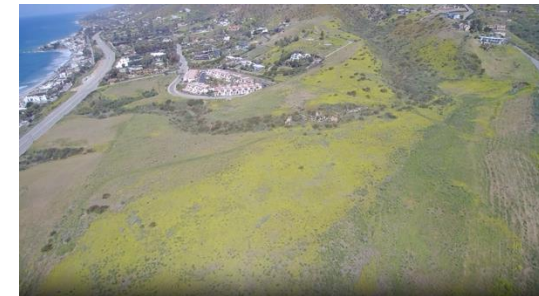
# Project Timeline

- Phase 2 will span August - October, collecting specific feedback on the types of categories the community envisions for each land
- In October, City Council will review the feedback received and determine the next steps (Meeting date TBD)



# Tonight's Goals

- Share the feedback received throughout Phase 1
- Discuss which category of uses would be best for each of the lands:
  - Chili Cook-Off
  - Triangle
  - Heathercliff
  - Trancas
  - La Paz



# Phase 1 Summary

- The City collected general feedback on the types of uses the community would like to see for the future in Malibu
- The City received:
  - 259 suggestions via email and website forms
  - 322 suggestions via community meetings and pop-up events
  - 201 suggestions via community survey (142 provided a Malibu address)
- Based on the input received, the City identified the most frequent suggestions to develop 10 categories to focus on in Phase 2

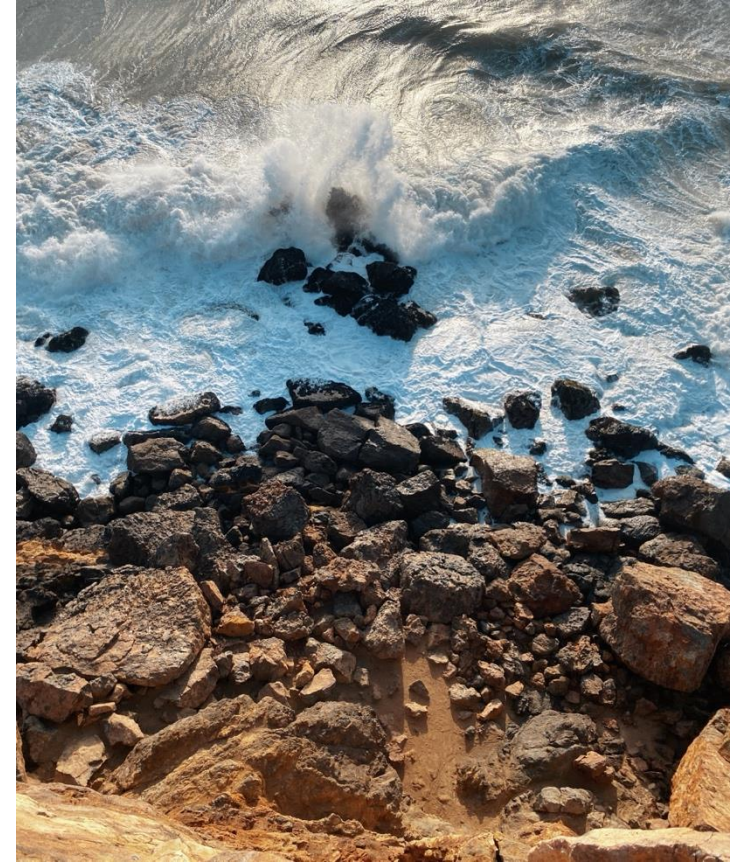
# Categories of Uses for Phase 2

- Commercial use (parking, business development)
- Community center (senior center, youth center, library, visitor center)
- Community pool/splash pad
- Grass sports fields (soccer, football, baseball, softball)
- Housing (workforce and senior)
- Indoor theatre/arts center
- Open space (pathways and trails, community garden)
- Outdoor amphitheater
- Sports courts (basketball, pickleball, tennis, bocci)
- Other (dog park, skate park, bike trails, bike parks)

# Phase 2 Feedback Focus

Which of the 10 categories do you envision for the future of each of the community lands?

- Chili Cook-Off
- Triangle
- Heathercliff
- Trancas
- La Paz

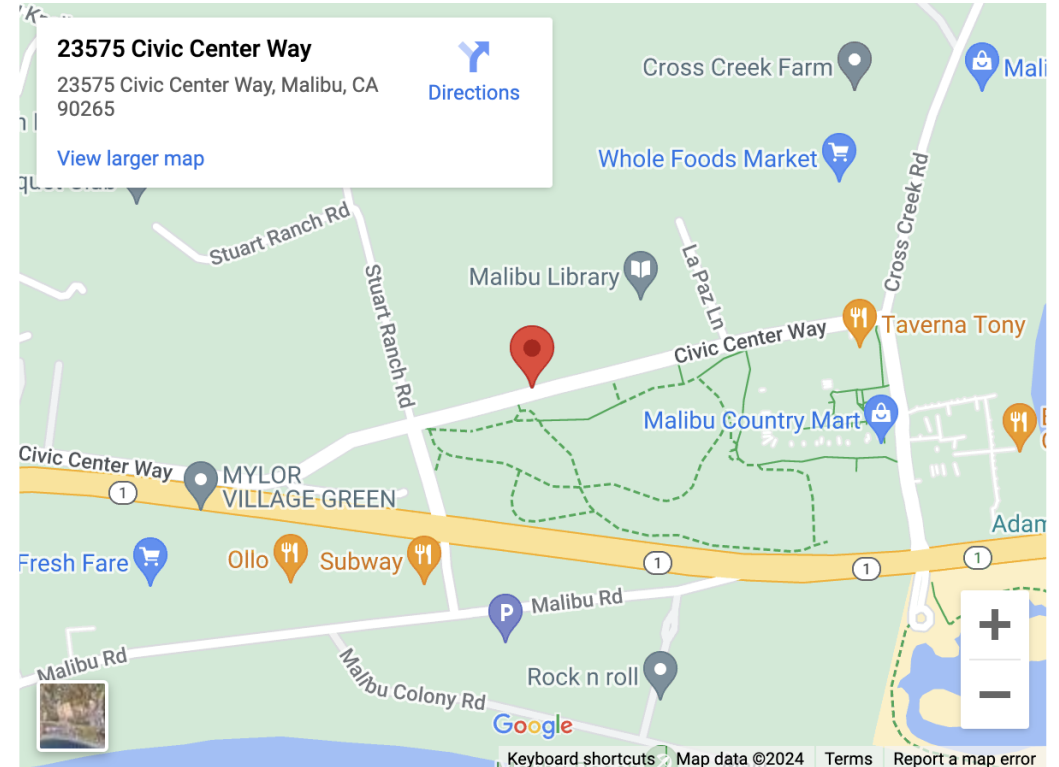




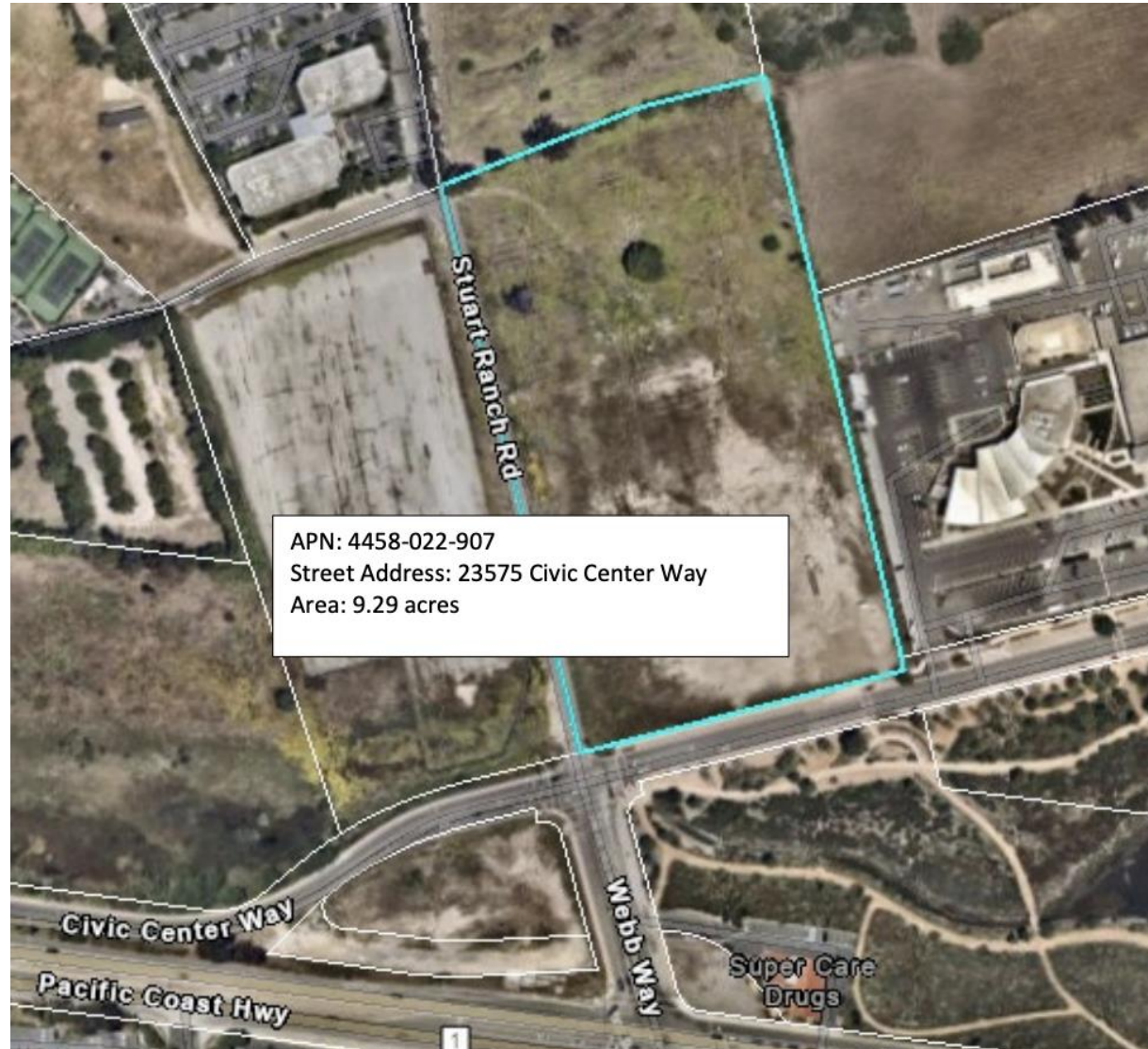
# Technical Review Findings

# “Chili Cook-Off”

- All categories are technically feasible within certain environmental considerations
- 9.29 acres
- Approximately 100 parking spaces required (Agreement with LA Metro)

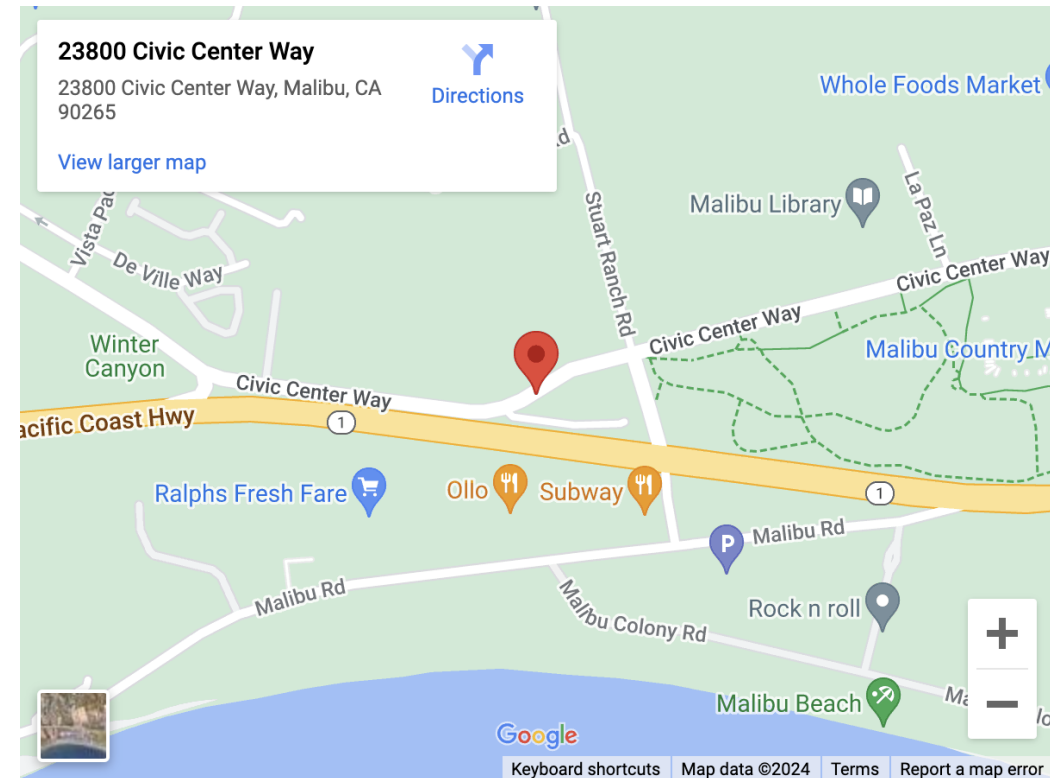


# “Chili Cook-Off”



# “Triangle”

- These categories are technically feasible within certain environmental considerations:
  - Parking
  - Open space
  - Grass sports field
  - Other, depending on use
- 1.11 acres
- Approximately 100 parking spaces required (Agreement with LA Metro)

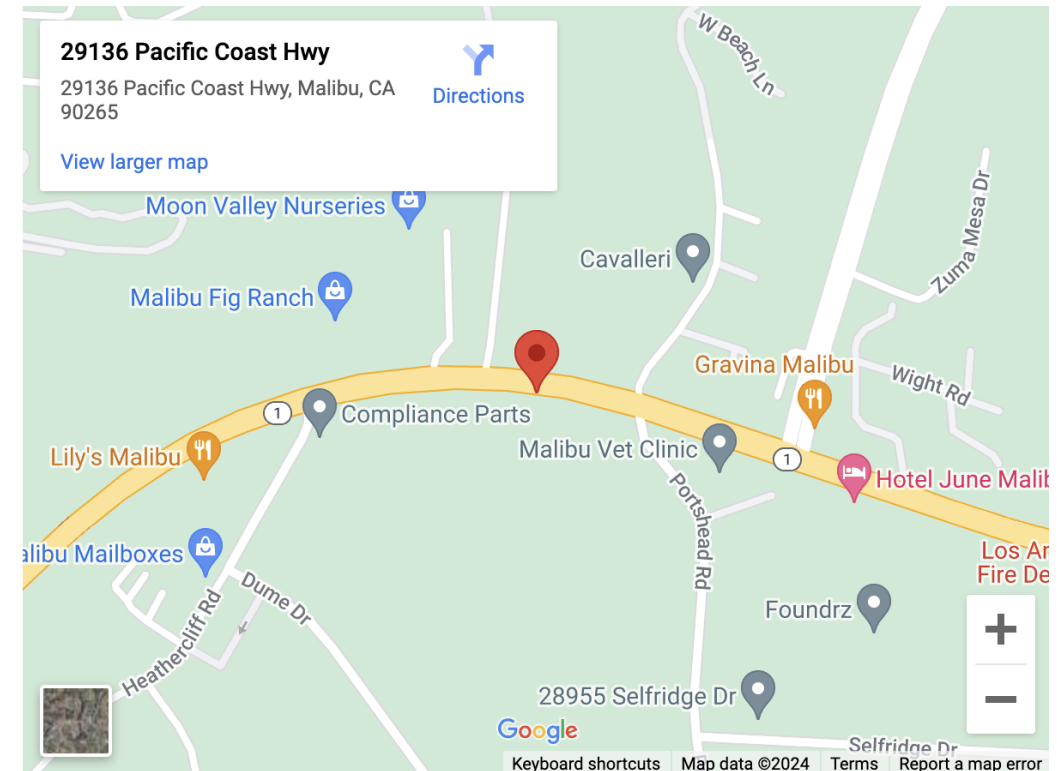


# “Triangle”

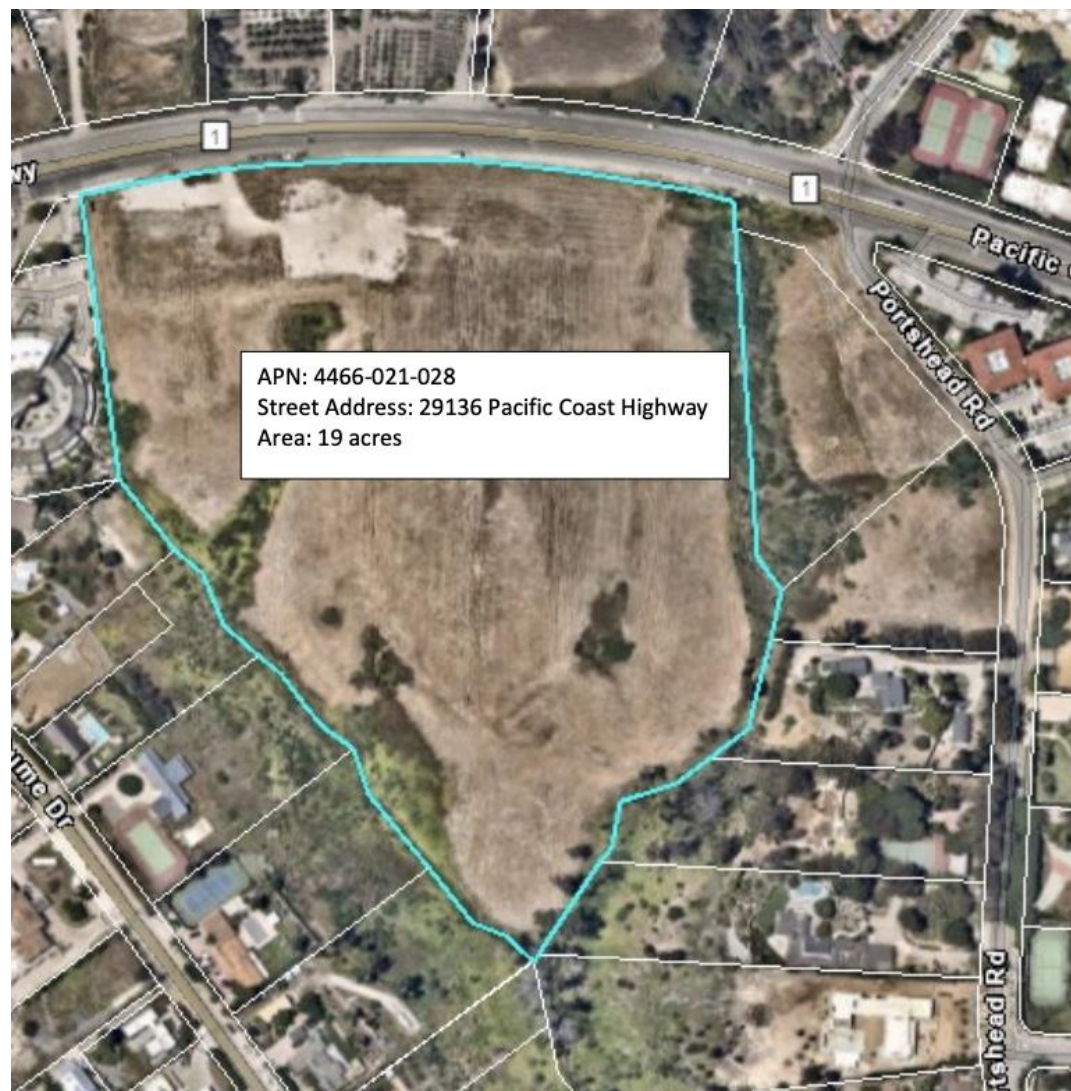


# “Heathercliff”

- All categories are technically feasible within certain environmental considerations
- 19 acres
- Approximately 200 parking spaces required (Agreement with LA Metro)

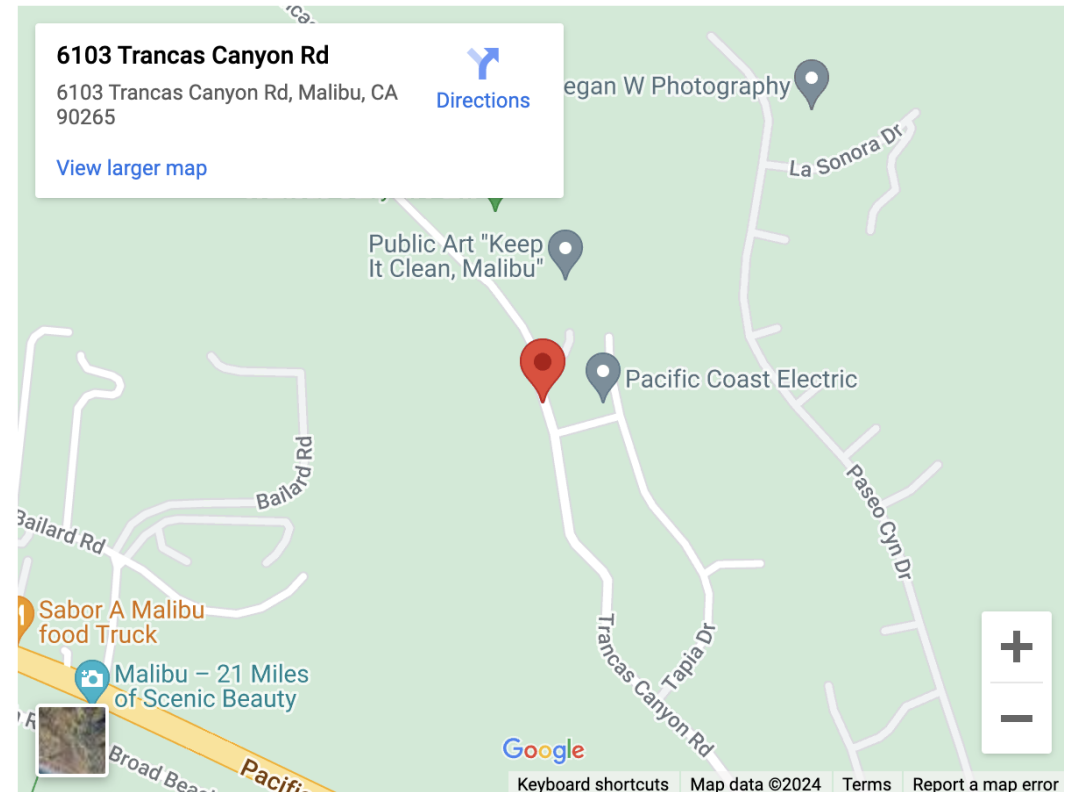


# “Heathercliff”



# “Trancas”

- All categories are technically feasible within certain environmental considerations
- 29.67 acres





# “Trancas”

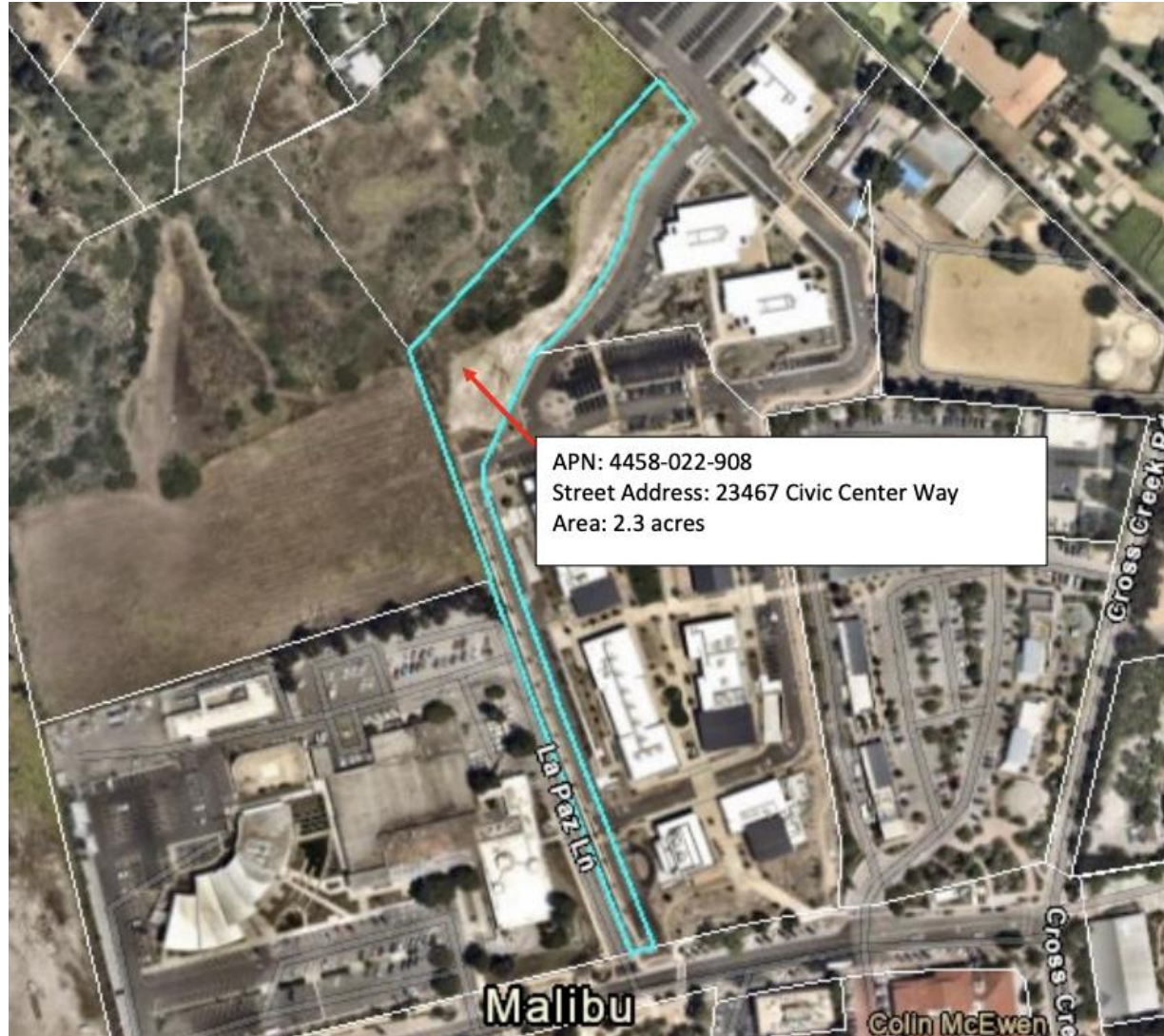


# “La Paz”

- These categories are technically feasible within certain environmental considerations:
  - Open space
  - Grass sports field
  - Other, depending on use
- 2.3 acres



# “La Paz”





# Group Activity

# Group Discussions / Activity

- **Which types of uses do you envision for the future of each land?**
- Step 1: In your groups, discuss your preferred uses based on the 10 categories
- Step 2: Write your group's top 3 choices for each land on a post-it and post it on the land's poster board. The goal is to reach 1 top choice



# Categories of Uses for Phase 2

- Commercial use (parking, business development)
- Community center (senior center, youth center, library, visitor center)
- Community pool/splash pad
- Grass sports fields (soccer, football, baseball, softball)
- Housing (workforce and senior)
- Indoor theatre/arts center
- Open space (pathways and trails, community garden)
- Outdoor amphitheater
- Sports courts (basketball, pickleball, tennis, bocci)
- Other (dog park, skate park, bike trails, bike parks)

# Group Discussion and Q&A

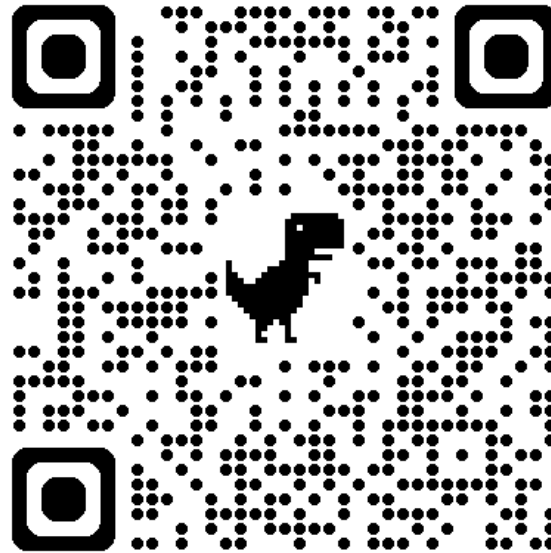
Zoom attendees: Please submit written questions via the Q&A feature.

# Upcoming Meetings & Pop-Up Events

	Location	Date	Time
<b>Pop-Up Event #2</b>	Trancas Market	Friday, August 23	6 - 9 p.m.
<b>Pop-Up Event #3</b>	Malibu Chili Cook-Off	Friday, August 30	4 - 10 p.m.
<b>Community Meeting #2</b>	Trancas Lot	Thursday, September 5	5:30 p.m.
<b>Community Meeting #3</b>	Chili Cook-Off Lot	Tuesday, September 17	10 a.m.



# Stay Involved



MalibuCommunityLands.org  
MalibuCommunityLands@MalibuCity.org